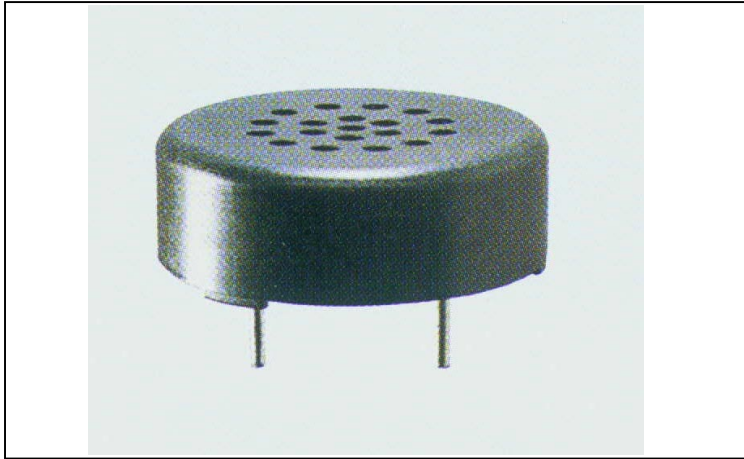


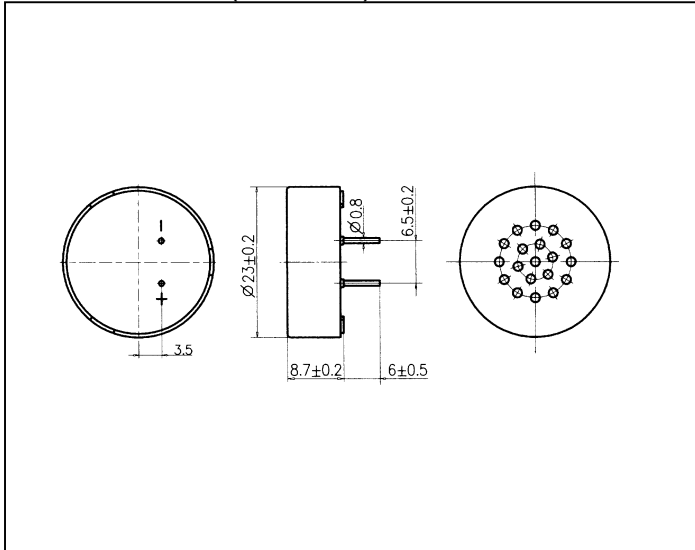
ECHO-DYNAMIC TRANSDUCER DT2365 SERIES



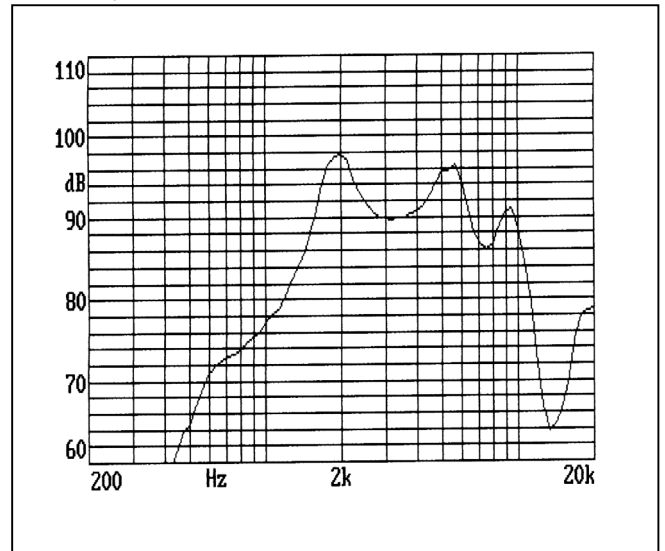
FEATURES:

- Small size & lightweight
- Wide range of frequency
- High sensitivity
- Long life
- Operating temperature -20°C ~ $+70^{\circ}\text{C}$
- Storage temperature -30°C ~ $+70^{\circ}\text{C}$

DIMENSIONS: (unit: mm)



FREQUENCY RESPONSE:



SPECIFICATIONS:

| | |
|-----------------------------|---|
| Model Number | DT2365 |
| Rated Impedance | $8 \pm 20\% \Omega$ |
| Max. Rated Power | 0.08(0.15) W |
| Resonance Frequency | 1500 ± 200 Hz |
| Rated Frequency Range | 500~4000 Hz |
| Sound Output at 10cm/1.5KHz | 73dB Min. |
| Operating Temperature | -20°C ~ $+60^{\circ}\text{C}$ |
| Storage Temperature | -30°C ~ $+70^{\circ}\text{C}$ |
| Weight | 3g |