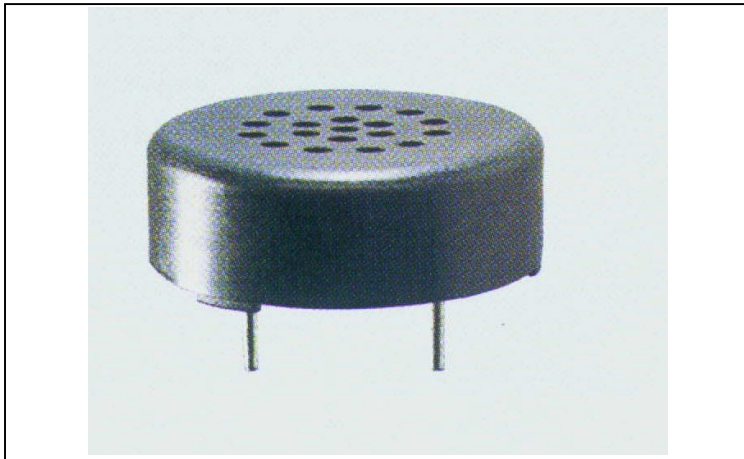


# ECHO-DYNAMIC TRANSDUCER

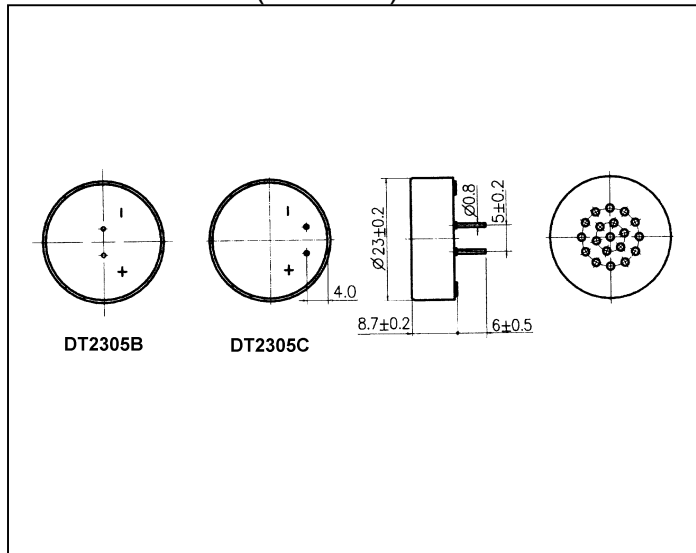
DT2305 SERIES



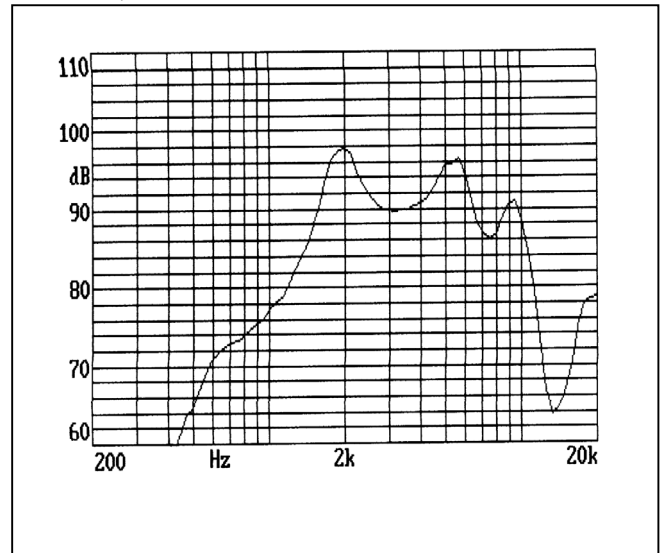
## FEATURES:

- Small size & lightweight
- Wide range of frequency
- High sensitivity
- Long life
- Operating temperature  $-20^{\circ}\text{C}$ ~ $+70^{\circ}\text{C}$
- Storage temperature  $-30^{\circ}\text{C}$ ~ $+70^{\circ}\text{C}$

## DIMENSIONS: (unit: mm)



## FREQUENCY RESPONSE:



## SPECIFICATIONS:

Model Number	DT2305B / C
Rated Impedance	$8 \pm 20\% \Omega$
Max. Rated Power	0.08(0.15)W
Resonance Frequency	$1500 \pm 200$ Hz
Rated Frequency Range	500~4000 Hz
Sound Output at 10cm/1.5KHz	73dB Min.
Operating Temperature	$-20^{\circ}\text{C}$ ~ $+60^{\circ}\text{C}$
Storage Temperature	$-30^{\circ}\text{C}$ ~ $+70^{\circ}\text{C}$
Weight	3g